

### TU18 DVB-T tuner / demodulator

*The TU18 is a combined V/UHF tuner and DVB-T demodulator. It supports most commonly used DVB-T modes. This module is intended for use with the DS21 video decoder, and is not suitable for stand alone use.*

#### Input

75 Ohm nominal IEC UHF connector.

Frequency range

49 to 860MHz

#### DVB-T modes supported

All 2K and 8K modes.  
6,7,8MHz bandwidth.  
Limited support for hierarchical modes.

#### Transport stream output

Standard 8 bit parallel transport stream at 3.3V

#### Power supply input

6-9V at 400mA (excluding current supplied to DS21).

#### Power Supply connector

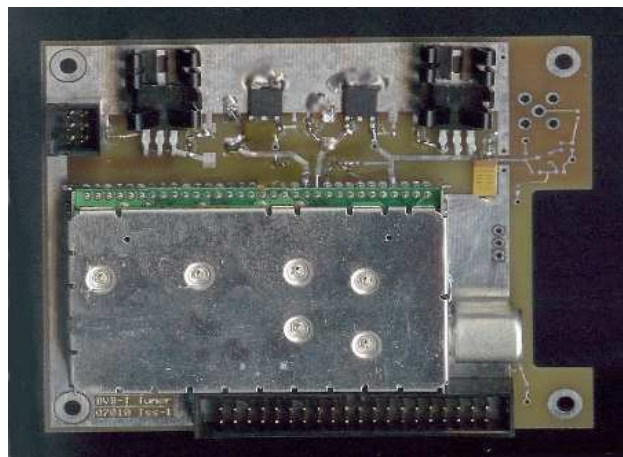
6 pin 0.1 inch pitch box header.

#### Power supply output

5V regulated at up to 1A. This regulated output can be used to supply the DS21 decoder.

#### Control/Status interfaces

I2C at 3.3V.



#### Interface connector to DS21

40 Pin Box header. This connector carries all transport stream, control/status and power connections needed to interface to the DS21.

#### Dimensions

Length: 100mm  
Width: 80mm

Height: 18mm maximum

Note: There is a cut-out for the input connector (see photo above). Depending on the type used, this connector may extend beyond the board boundaries.